



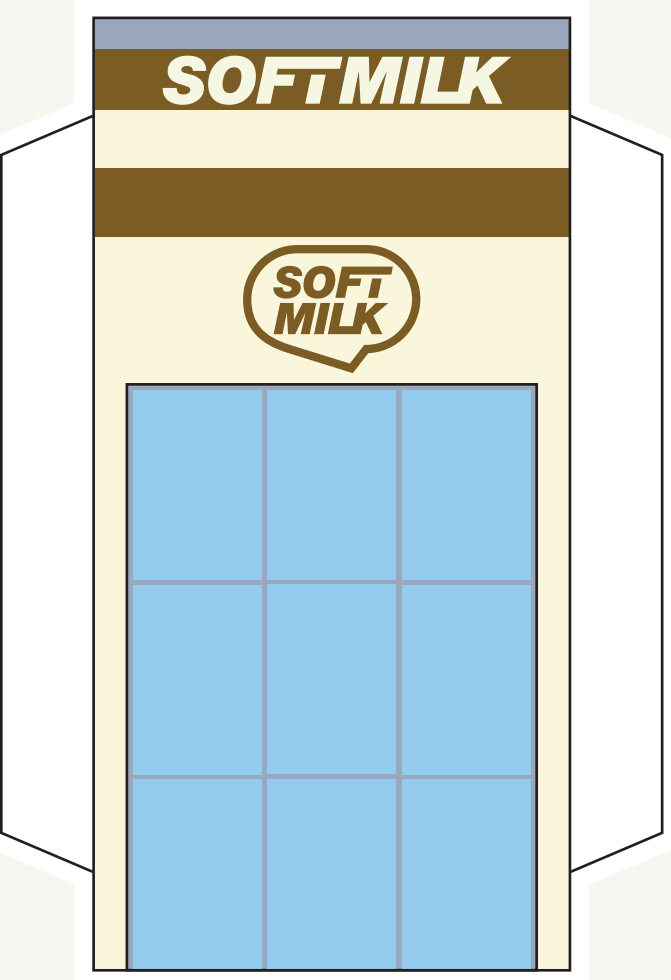
# SOFTMILK BAR

FOLD OUT KIT  
HOBBY SPECIAL 2002-4

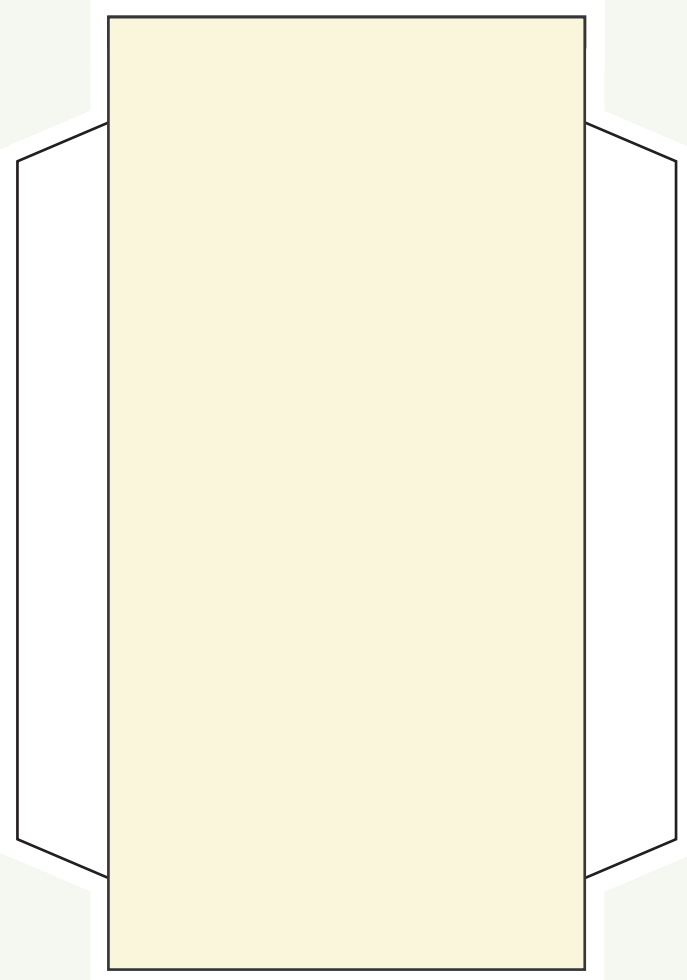
A-FORMAT SHEET  
1/1

1-7  
BUILD BY NUMBERS

1



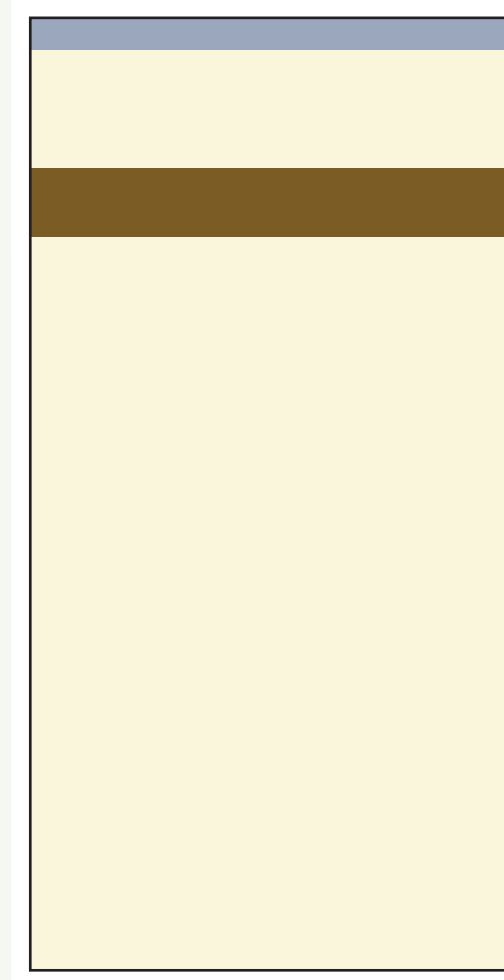
2



3



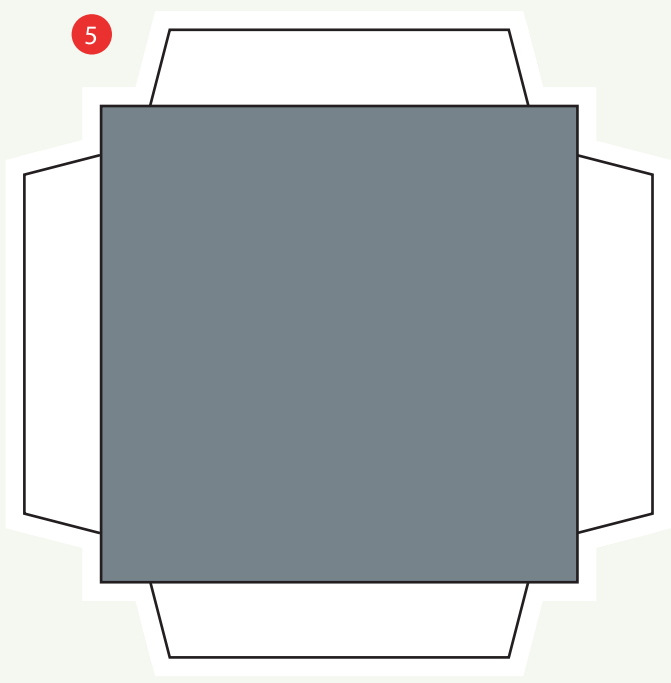
4



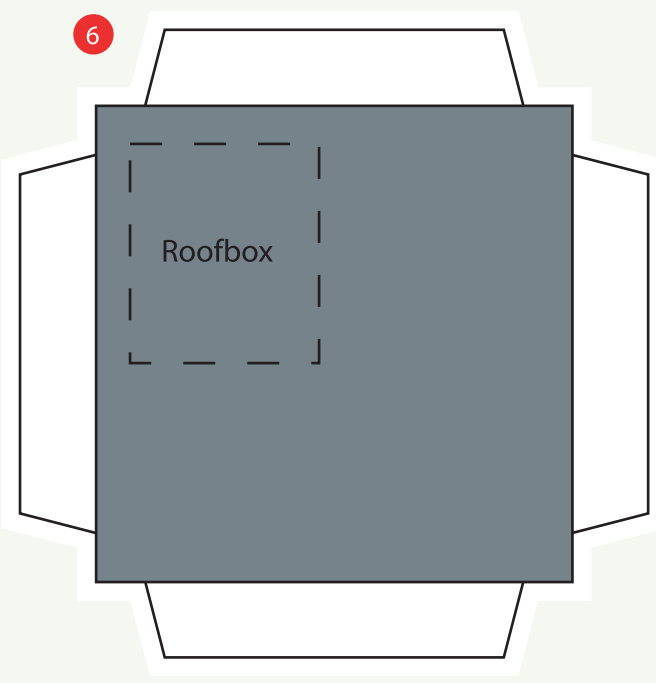
1. Front 2. Back 3. Left side  
4. Right side 5. Base of building  
6. Top of building 7. Roofbox
- THE PARTS



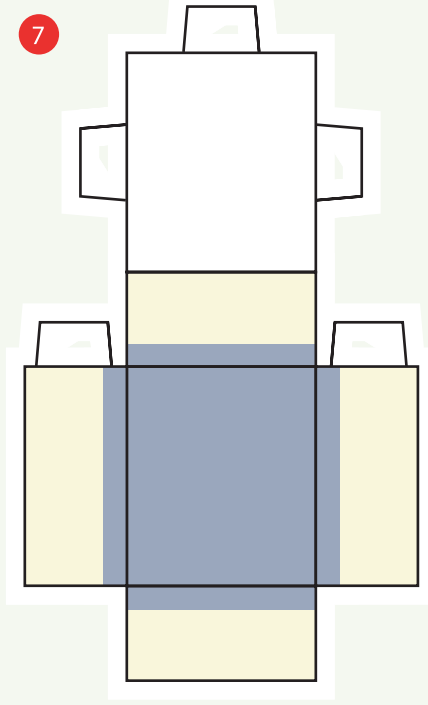
5



6



7



If you've done it right, your house should look something like the house in the picture!  
Happy building!

